

43 Amroth Avenue, Toronto, ON

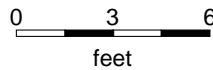
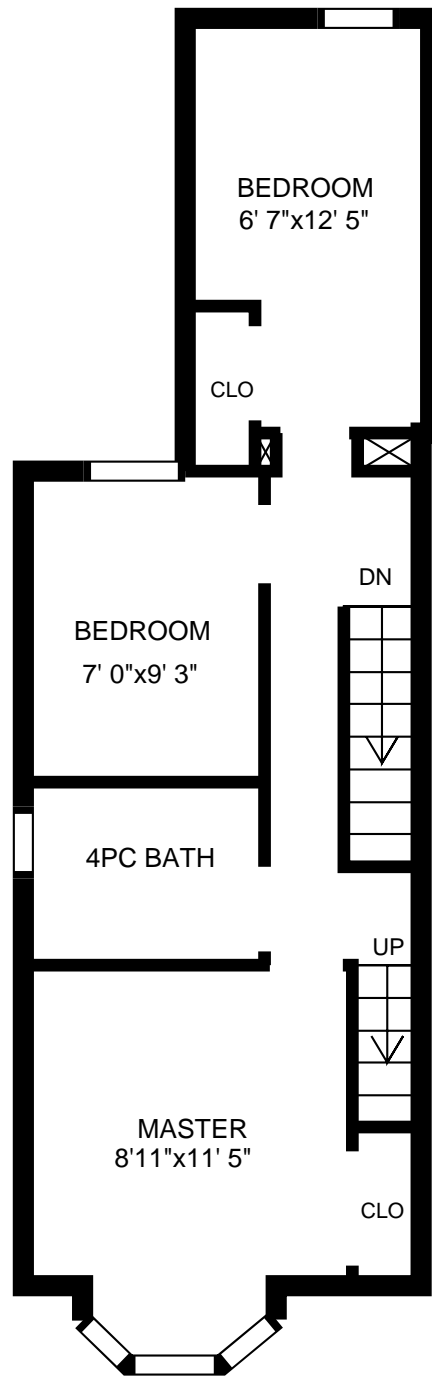
Main floor

PREPARED FOR:

Usable Floor Area (UFA): 550 sq. ft
 Gross Floor Area (GFA): 630 sq. ft

PREPARED ON:
 May 12, 2015

All rooms dimensions and floor areas must be considered approximate and are subject to independent verification. For method of measurement please see <http://walk-inside.com/measure>



43 Amroth Avenue, Toronto, ON

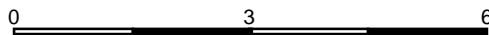
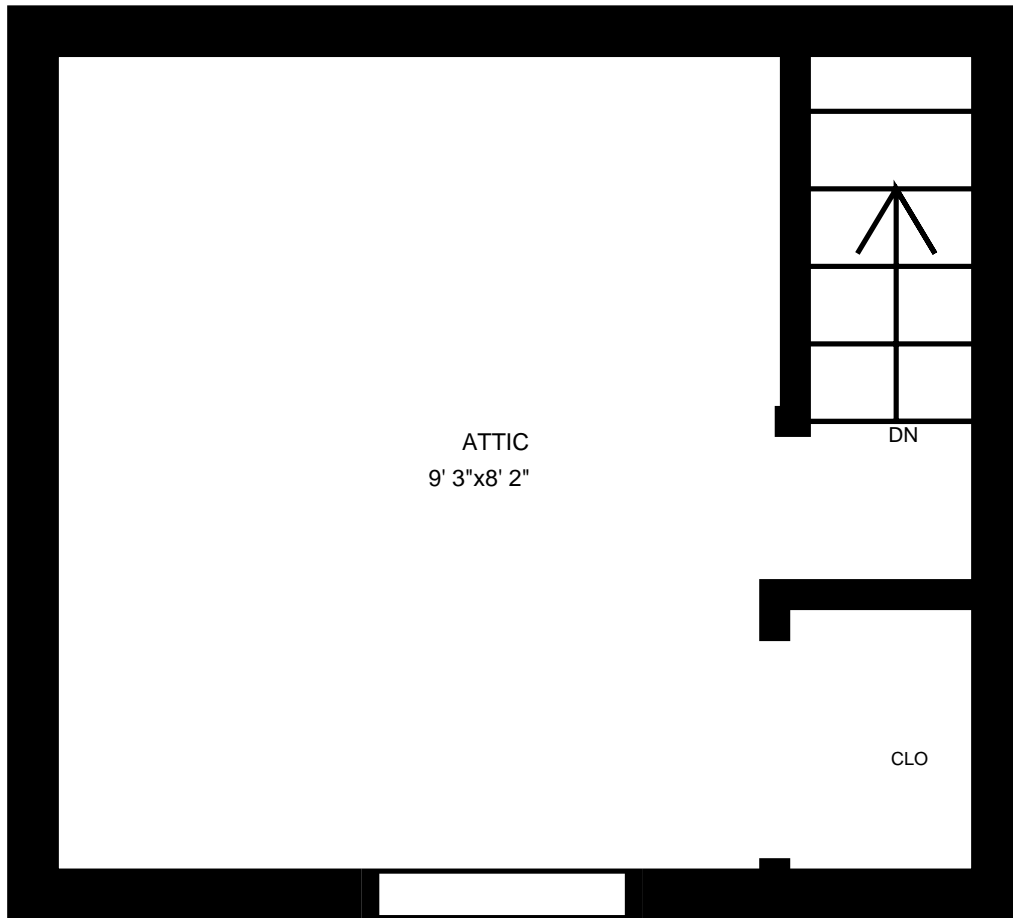
2nd floor

PREPARED FOR:

Usable Floor Area (UFA): 410 sq. ft
Gross Floor Area (GFA): 480 sq. ft

PREPARED ON:
May 12, 2015

All rooms dimensions and floor areas must be considered approximate and are subject to independent verification. For method of measurement please see <http://walk-inside.com/measure>



43 Amroth Avenue, Toronto, ON

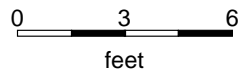
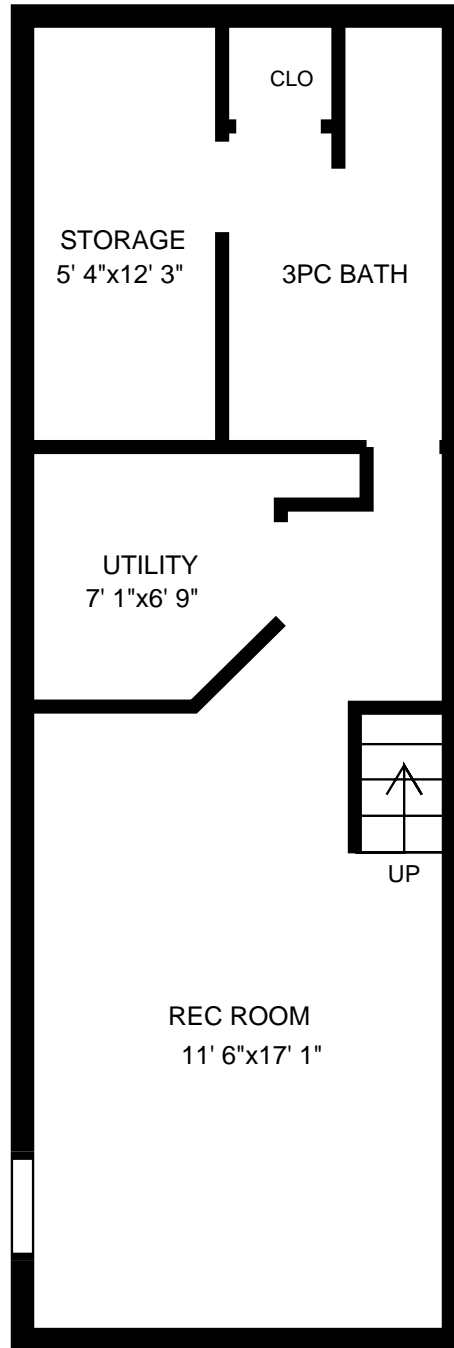
3rd floor

PREPARED FOR:

Usable Floor Area (UFA): 130 sq. ft
 Gross Floor Area (GFA): 160 sq. ft

PREPARED ON:
 May 12, 2015

All rooms dimensions and floor areas must be considered approximate and are subject to independent verification. For method of measurement please see <http://walk-inside.com/measure>



43 Amroth Avenue, Toronto, ON

Basement

PREPARED FOR:

Usable Floor Area (UFA): 420 sq. ft
 Gross Floor Area (GFA):

PREPARED ON:
 May 12, 2015

All rooms dimensions and floor areas must be considered approximate and are subject to independent verification. For method of measurement please see <http://walk-inside.com/measure>