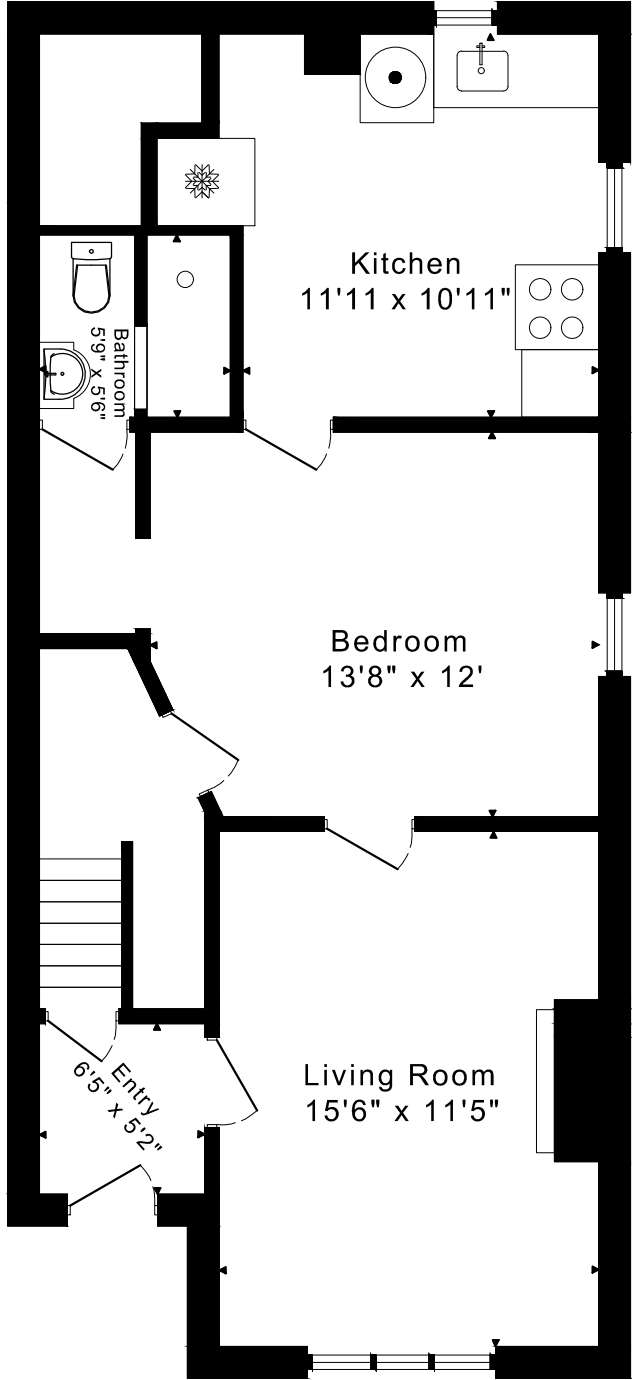
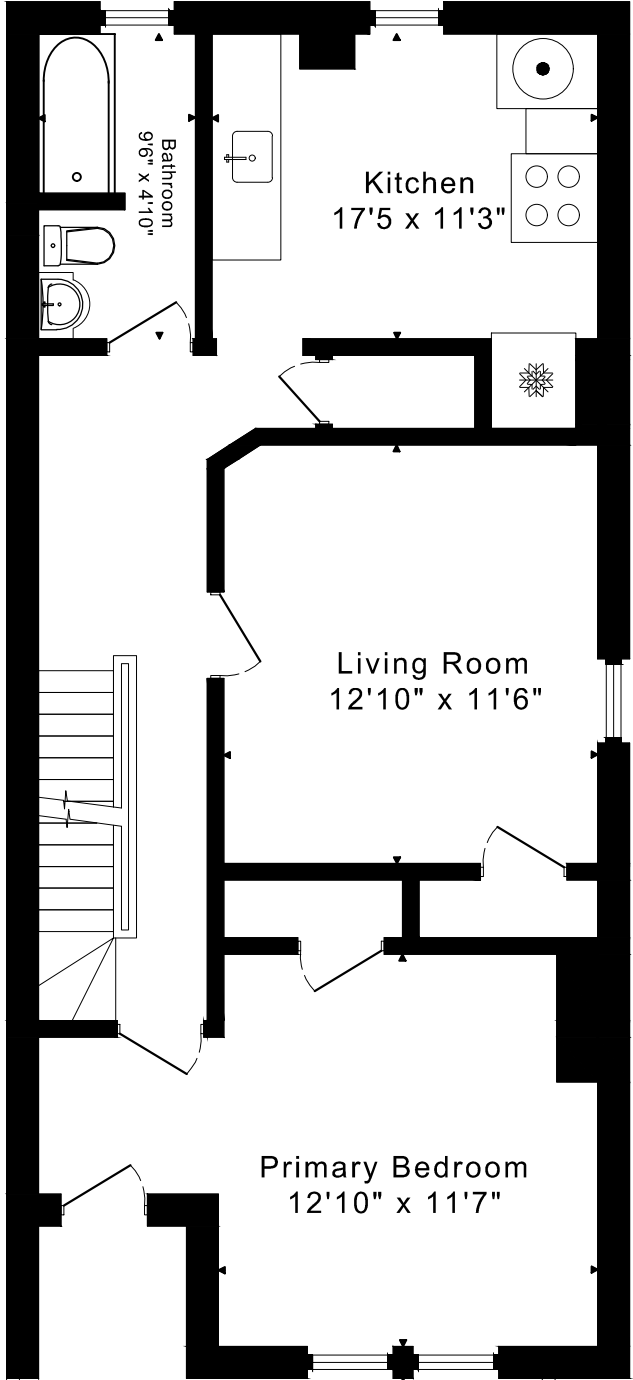


# 133 CARLAW AVENUE FLOOR PLANS

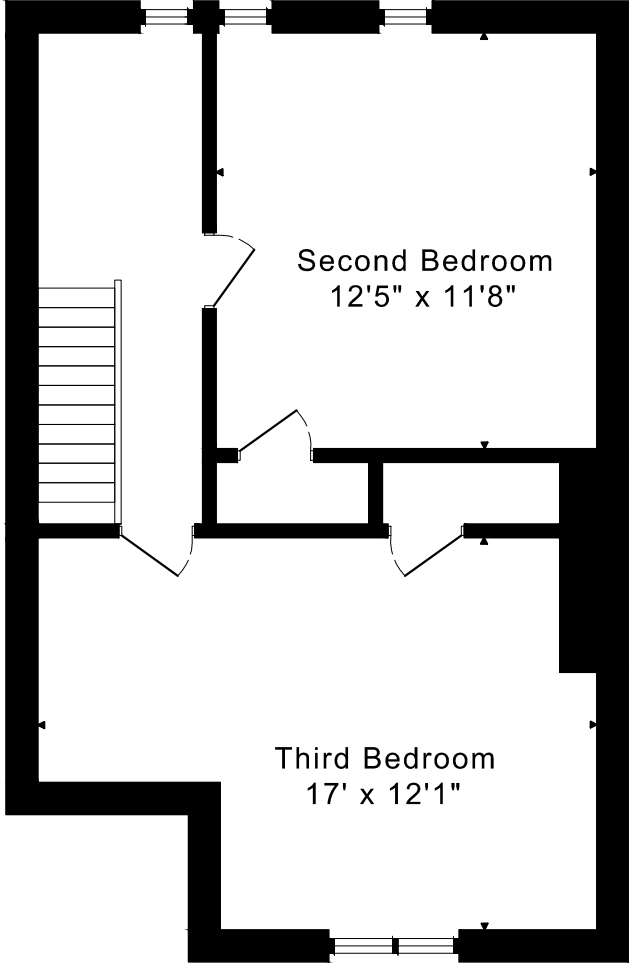


**MAIN FLOOR**  
780 SQUARE FEET

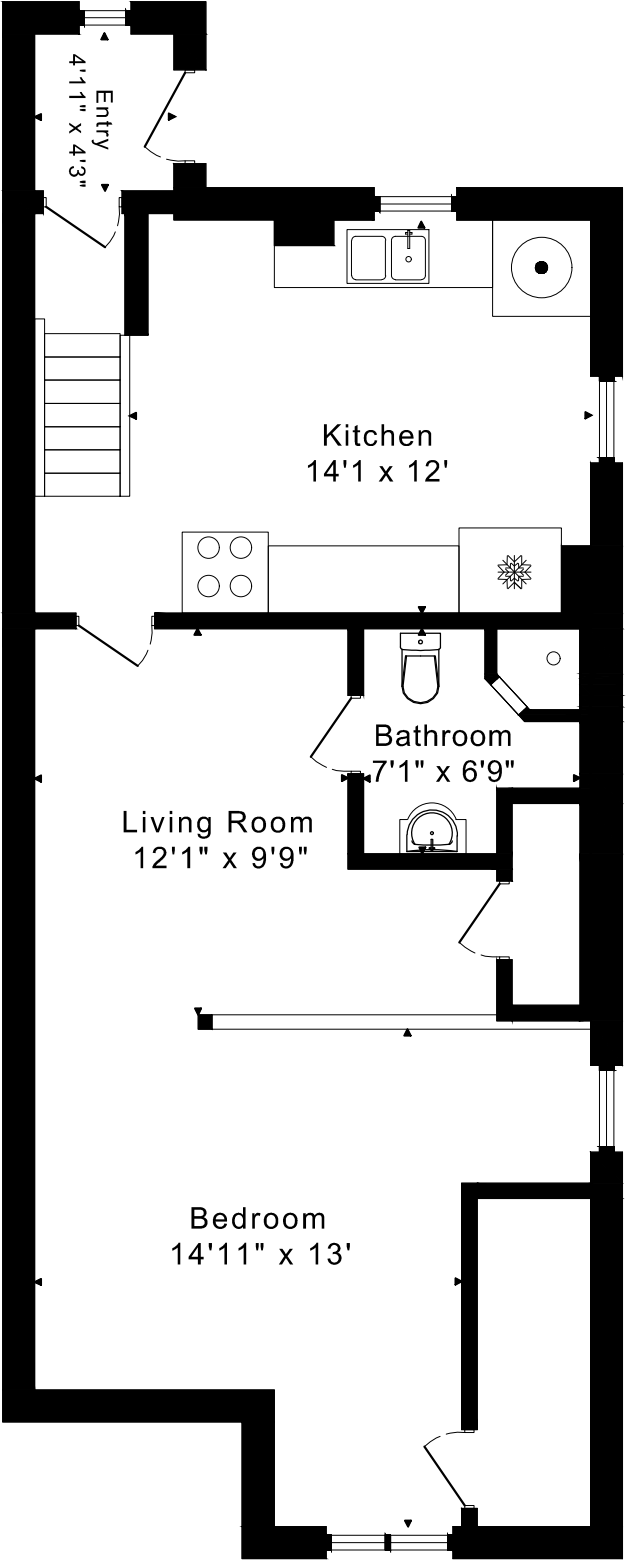


**SECOND FLOOR**  
780 SQUARE FEET

Balcony  
15'9" x 7'6"



**THIRD FLOOR**  
540 SQUARE FEET



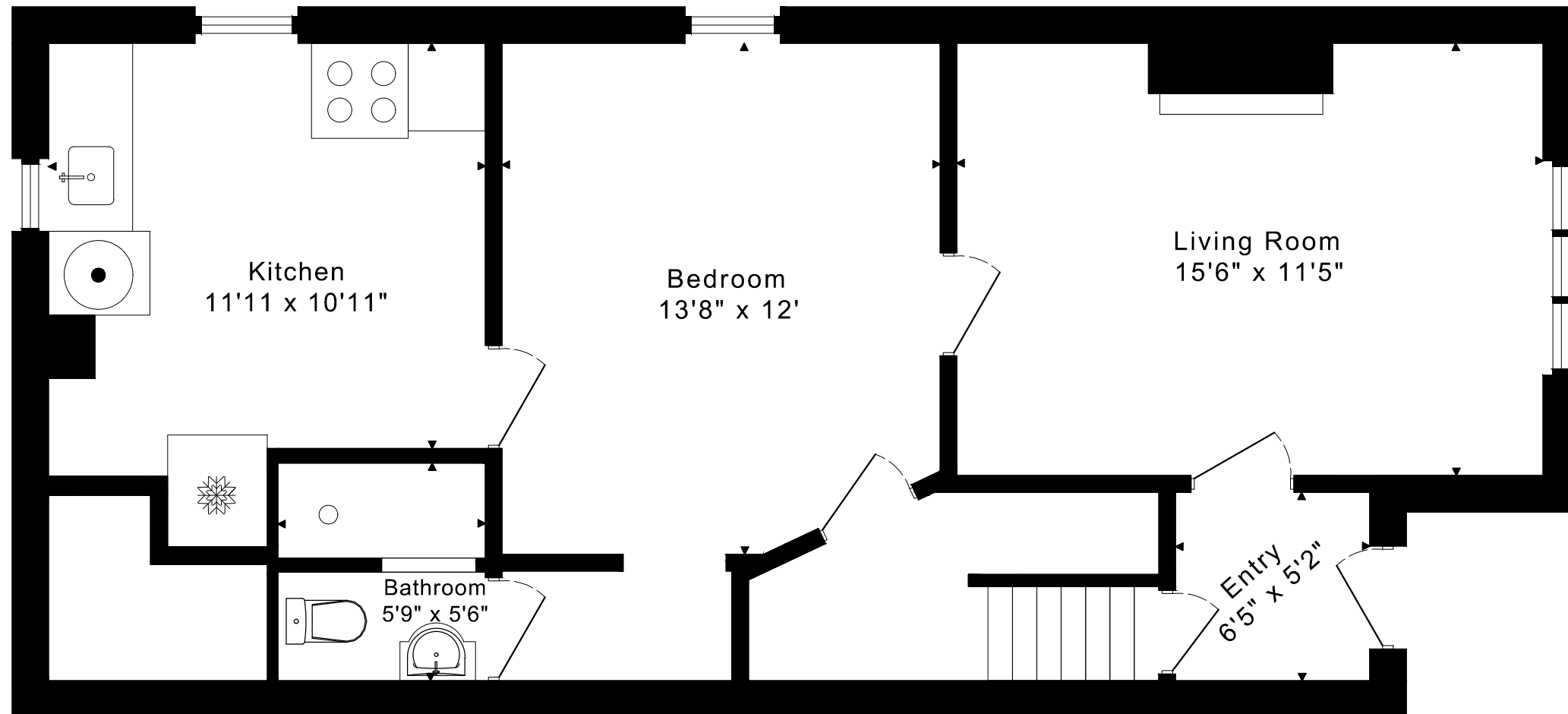
**LOWER FLOOR**  
805 SQUARE FEET

2100 sq ft + 805 sq ft  
BELOW GRADE

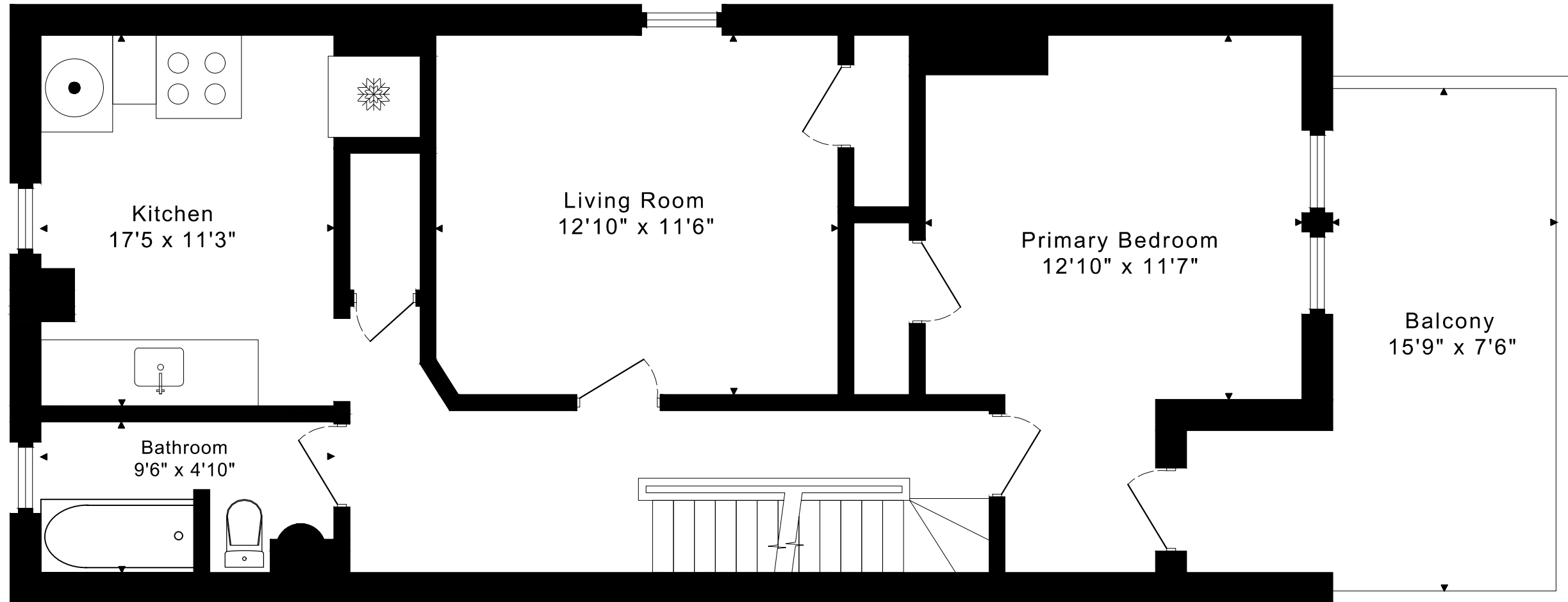
CAPTURED ON: 23 JAN 2025  
DIMENSIONS ARE APPROXIMATE AND SHOULD BE CONSIDERED  
ILLUSTRATIVE ONLY.

# 133 CARLAW AVENUE FLOOR PLANS

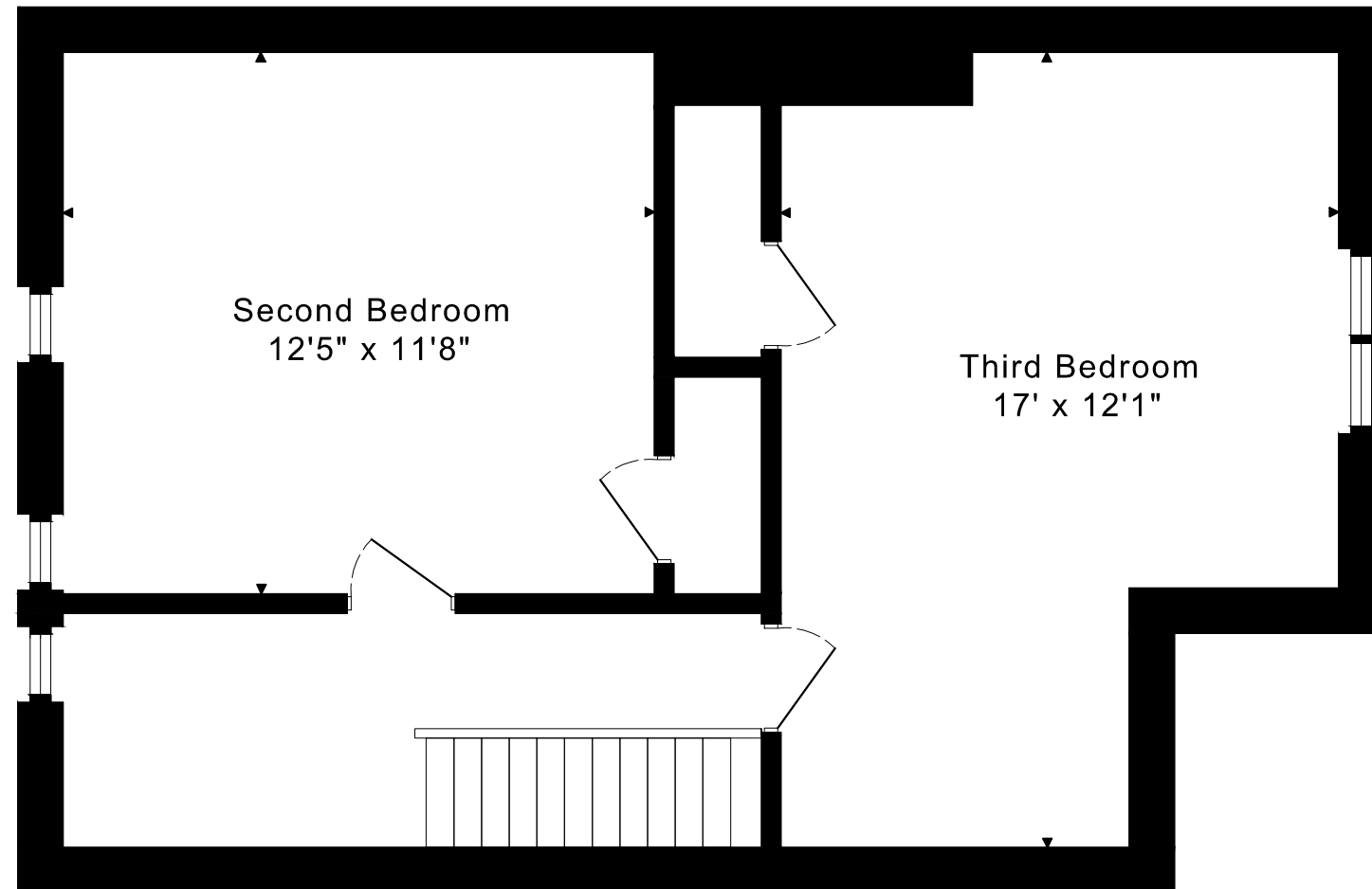
MAIN FLOOR 780 SQUARE FEET



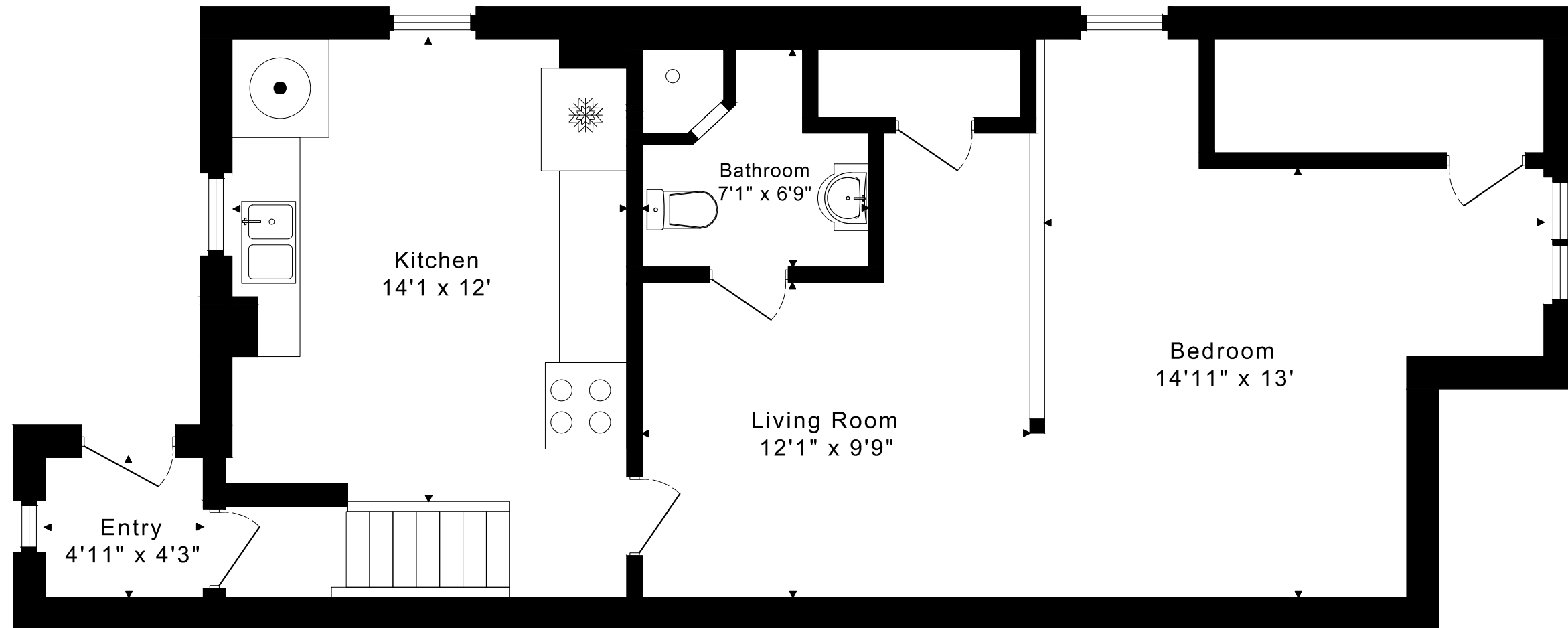
133 CARLAW AVENUE  
FLOOR PLANS  
SECOND FLOOR 780 SQUARE FEET



133 CARLAW AVENUE  
FLOOR PLANS  
THIRD FLOOR 540 SQUARE FEET



133 CARLAW AVENUE  
FLOOR PLANS  
LOWER FLOOR 805 SQUARE FEET



133 CARLAW AVENUE ROOM MEASUREMENTS

Floor	Room	Imperial				Metric [m]	
		Length		Width		Length	Width
		Feet	Inches	Feet	Inches		
Third	Second Bedroom	12	5	11	8	3,78	3,56
	Third Bedroom	17	0	12	1	5,18	3,68
Second	Living Room	12	10	11	6	3,91	3,51
	Kitchen	11	9	9	7	3,58	2,92
	Primary Bedroom	12	10	11	7	3,91	3,53
	Bathroom	9	6	4	10	2,90	1,47
	Balcony	15	9	7	6	4,80	2,29
Main	Entry	6	5	5	2	1,96	1,57
	Living Room	15	6	11	5	4,72	3,48
	Bedroom	13	8	12	0	4,17	3,66
	Kitchen	11	11	10	11	3,63	3,33
	Bathroom	5	9	5	6	1,75	1,68
Lower	Entry	4	11	4	3	1,50	1,30
	Living Room	12	1	9	9	3,68	2,97
	Kitchen	14	1	12	0	4,29	3,66
	Bedroom	14	11	13	0	4,55	3,96
	Bathroom	7	1	6	9	2,16	2,06

The following is a disclaimer regarding the approximate nature of dimensions and floor areas listed in this document:

---

**Disclaimer:**

The dimensions and floor areas listed in this document are provided as an estimate only and are intended to be used for illustration purposes only. These measurements are not necessarily meant to be a perfect representation of the actual space.

**Notes regarding measurement methods and accuracy:**

The utilization of laser measurement technology during the 3D model capturing process at the location provides an accurate representation of floor plans, with a typical margin of error of 3-5%. For the most accurate and official measurement data, it is advised to consult official documents such as MPAC records, builder's pre-construction plans, or data from certified measurement companies.

Exterior wall thickness is included in the calculation of the overall square footage and is considered as a component of the footprint. The wall thickness measurement is obtained onsite whenever possible, or estimated in the event where obtaining onsite measurements is not possible, such as in the case of condominium buildings where wall thickness may vary throughout the building.