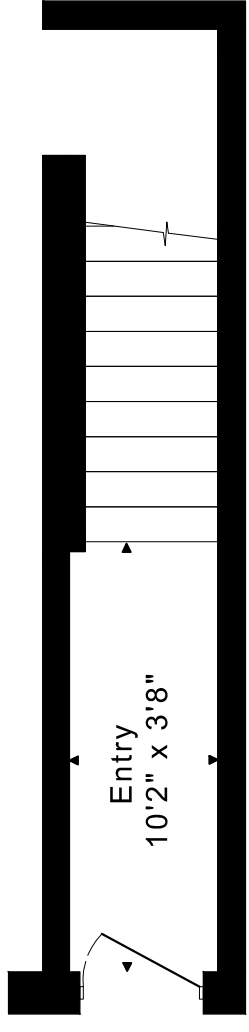
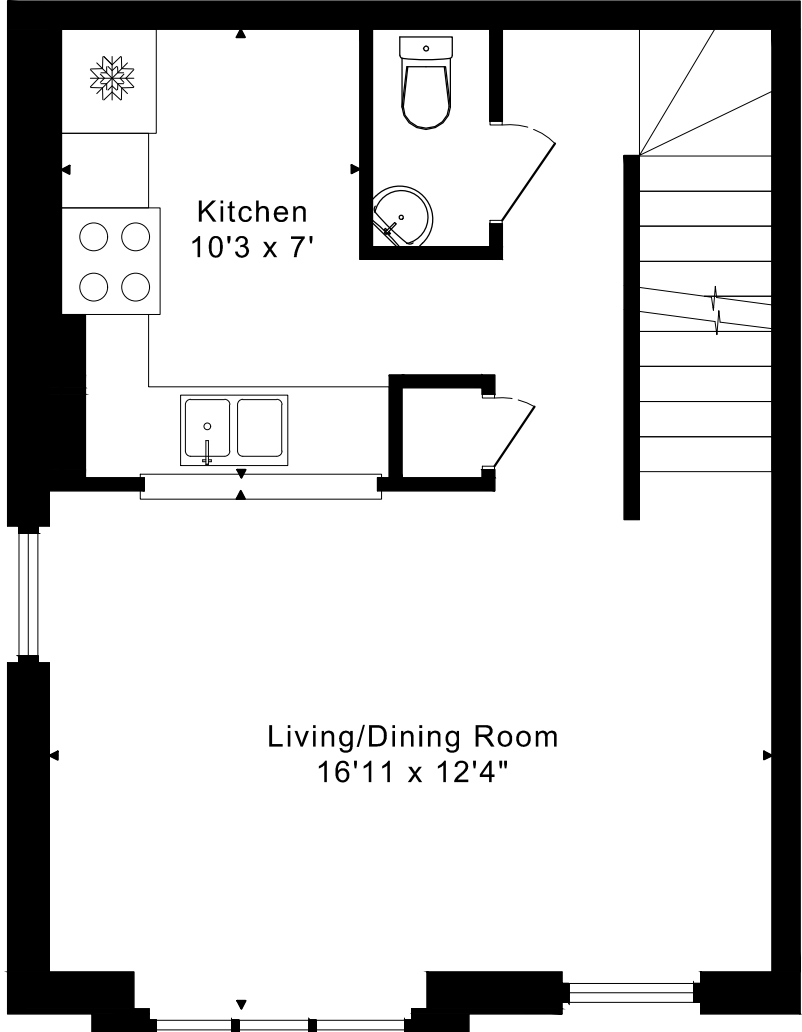


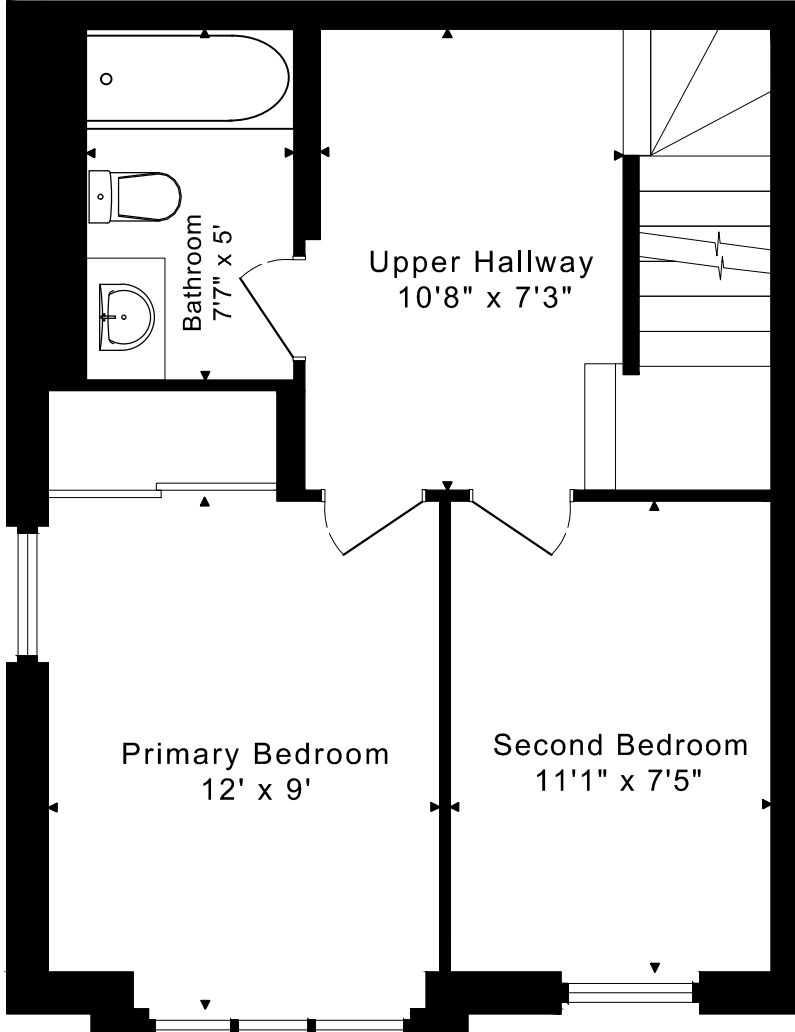
5 EVERSON DRIVE TH 804 FLOOR PLANS



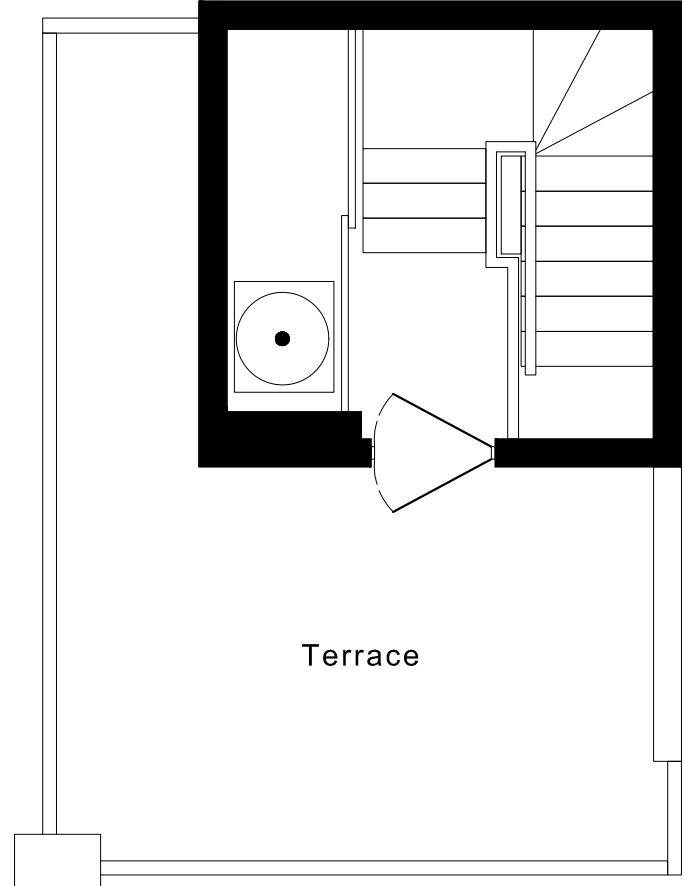
MAIN FLOOR
85 SQUARE FEET



SECOND FLOOR
445 SQUARE FEET



THIRD FLOOR
445 SQUARE FEET



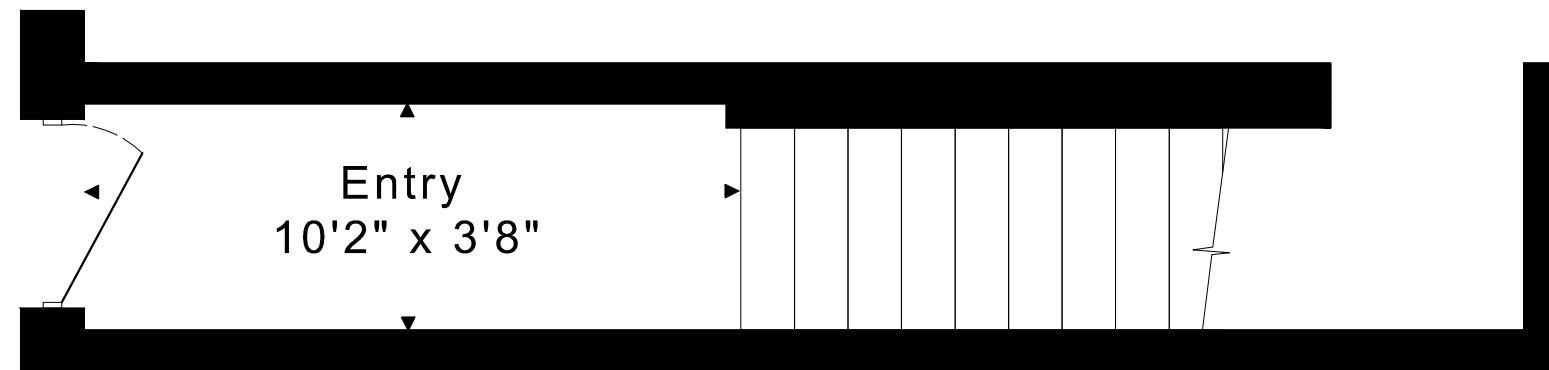
FOURTH FLOOR
125 SQUARE FEET

1100 sq ft

CAPTURED ON: 23 JAN 2025
DIMENSIONS ARE APPROXIMATE AND SHOULD BE CONSIDERED
ILLUSTRATIVE ONLY.

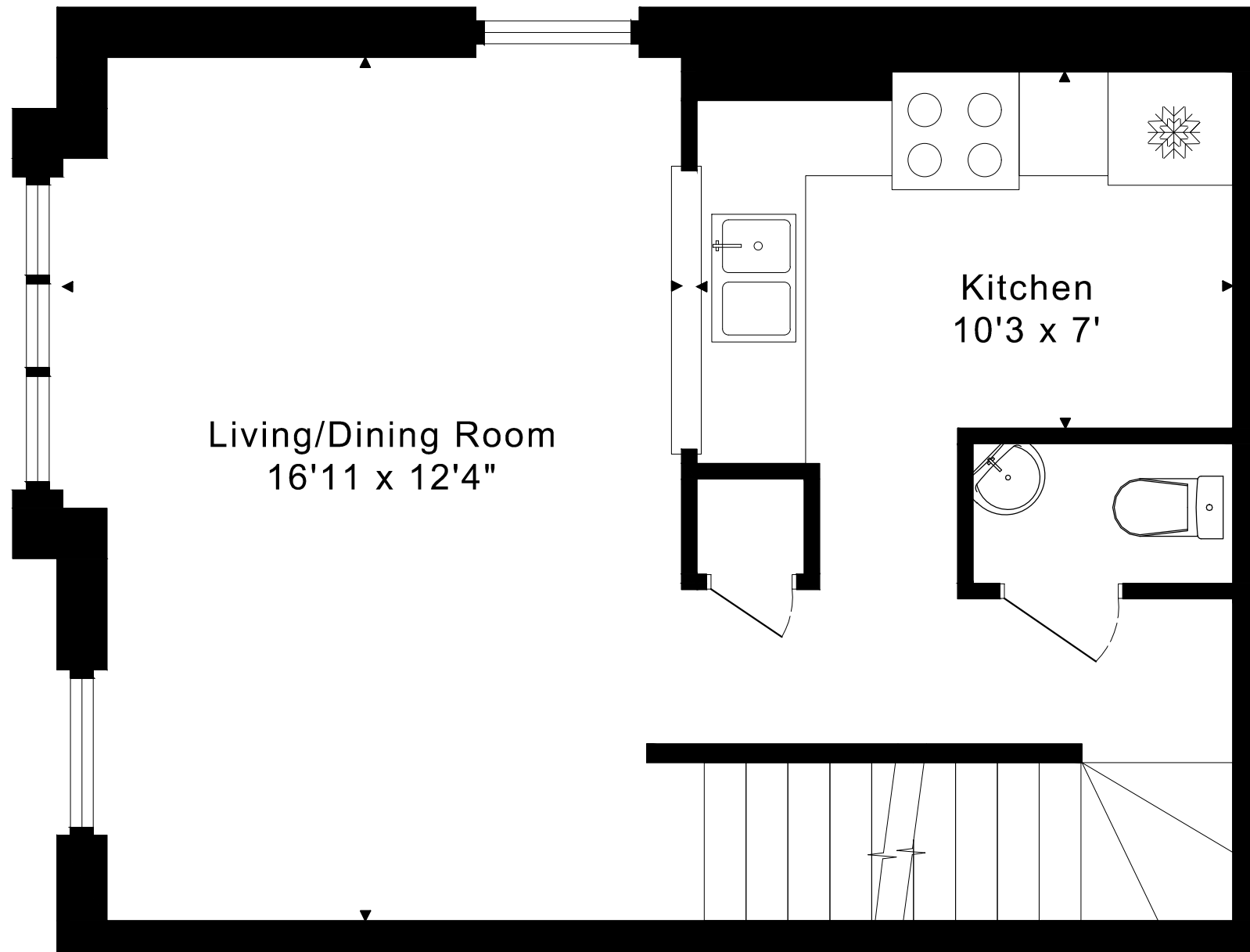
5 EVERSON DRIVE TH 804 FLOOR PLANS

MAIN FLOOR 85 SQUARE FEET



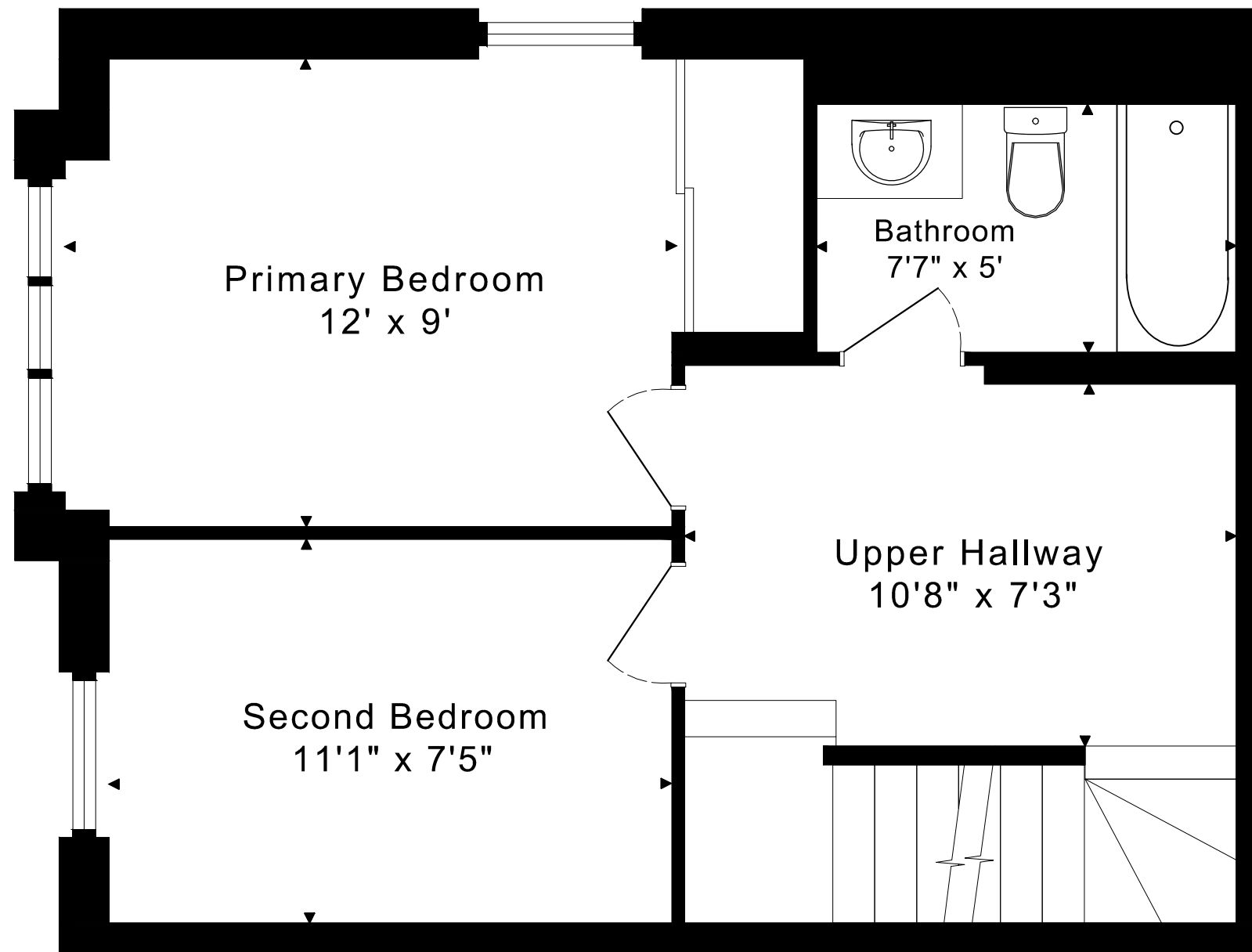
5 EVERSON DRIVE TH 804 FLOOR PLANS

SECOND FLOOR 445 SQUARE FEET



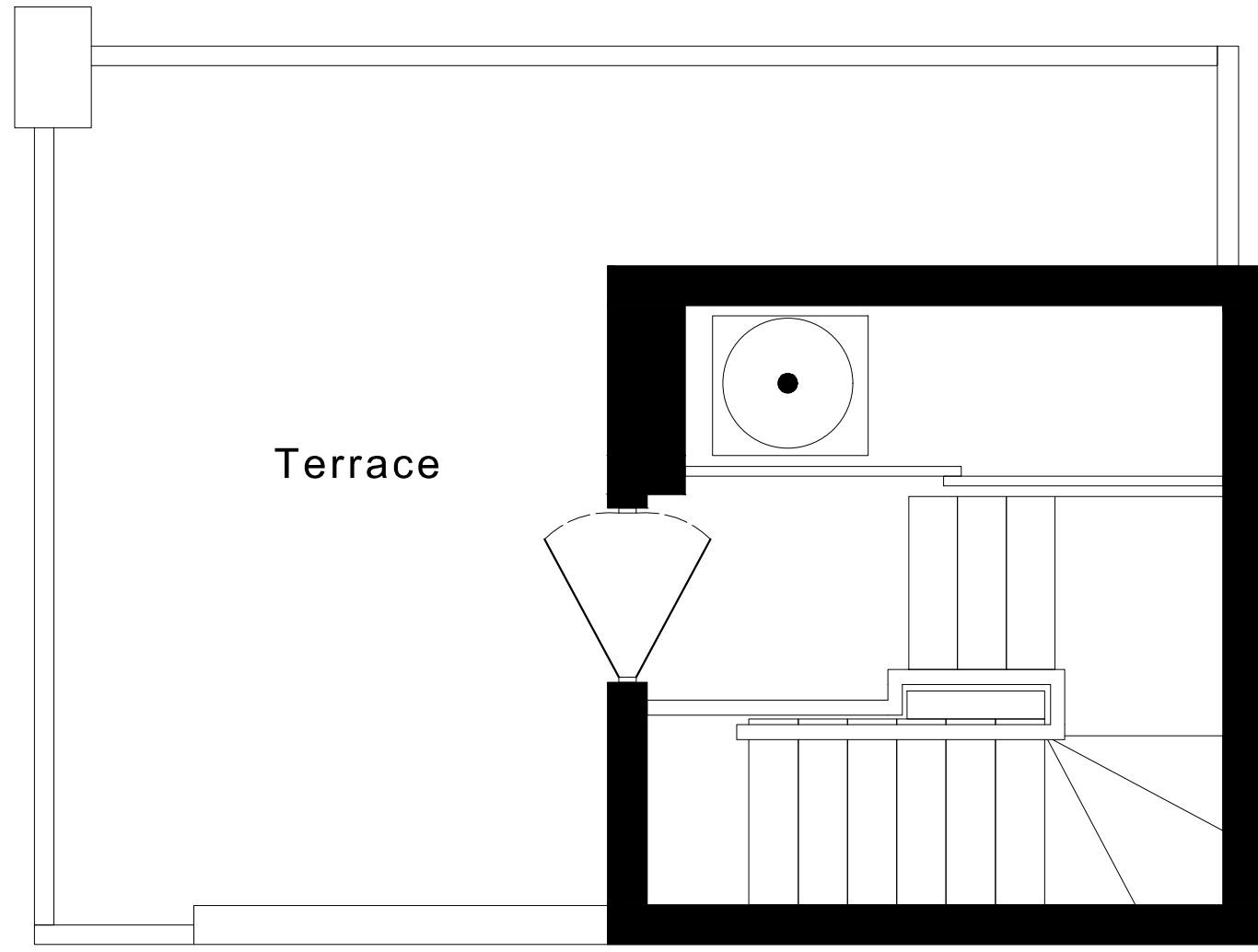
5 EVERSON DRIVE TH 804 FLOOR PLANS

THIRD FLOOR 445 SQUARE FEET



5 EVERSON DRIVE TH 804 FLOOR PLANS

FOURTH FLOOR 125 SQUARE FEET



5 EVERSON DRIVE TH 804 ROOM MEASUREMENTS

Floor	Room	Imperial				Metric [m]	
		Length		Width		Length	Width
		Feet	Inches	Feet	Inches		
Third	Primary Bedroom	12	0	9	0	3,66	2,74
	Second Bedroom	11	1	7	5	3,38	2,26
	Upper Hallway	10	8	7	3	3,25	2,21
	Bathroom	7	7	5	0	2,31	1,52
Second	Living/Dining Room	16	11	12	4	5,16	3,76
	Kitchen	10	3	7	0	3,12	2,13
Main	Entry	10	2	3	8	3,10	1,12

CAPTURED ON: 23 JAN 2025
 DIMENSIONS ARE APPROXIMATE AND SHOULD BE CONSIDERED
 ILLUSTRATIVE ONLY.

1100 sq ft

The following is a disclaimer regarding the approximate nature of dimensions and floor areas listed in this document:

Disclaimer:

The dimensions and floor areas listed in this document are provided as an estimate only and are intended to be used for illustration purposes only. These measurements are not necessarily meant to be a perfect representation of the actual space.

Notes regarding measurement methods and accuracy:

The utilization of laser measurement technology during the 3D model capturing process at the location provides an accurate representation of floor plans, with a typical margin of error of 3-5%. For the most accurate and official measurement data, it is advised to consult official documents such as MPAC records, builder's pre-construction plans, or data from certified measurement companies.

Exterior wall thickness is included in the calculation of the overall square footage and is considered as a component of the footprint. The wall thickness measurement is obtained onsite whenever possible, or estimated in the event where obtaining onsite measurements is not possible, such as in the case of condominium buildings where wall thickness may vary throughout the building.