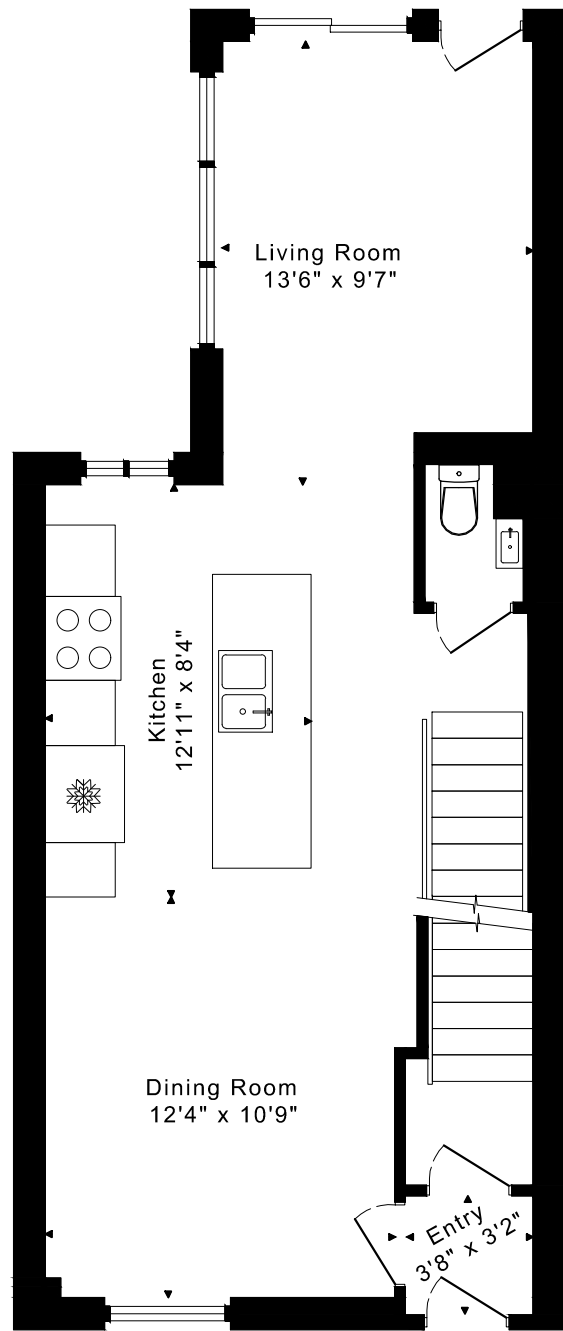
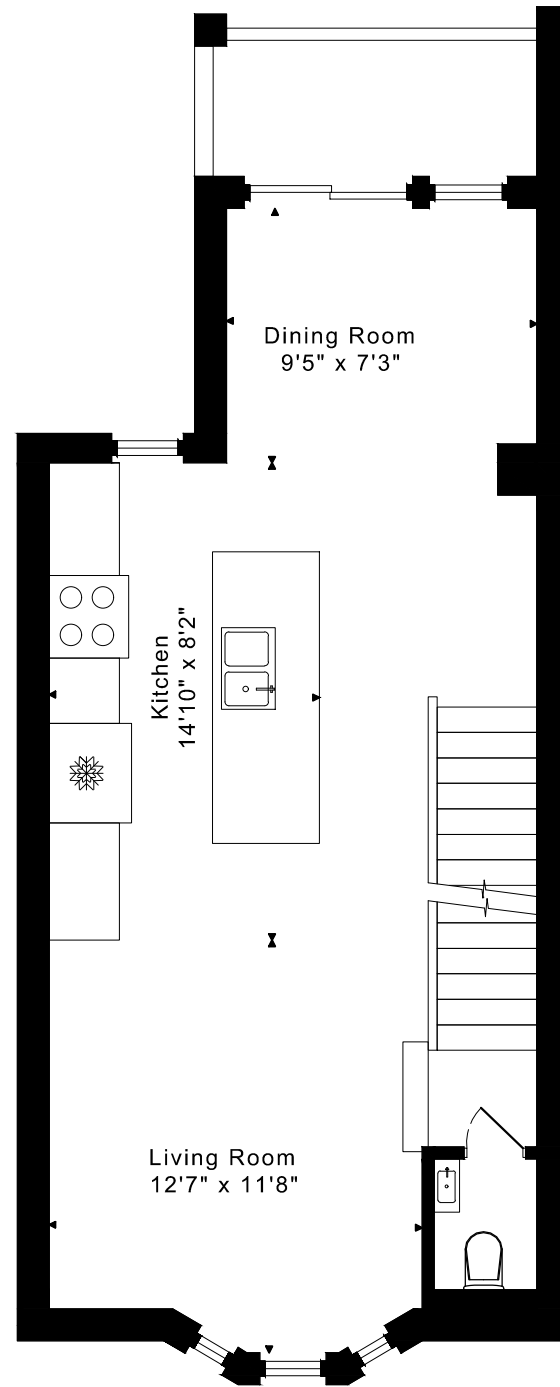


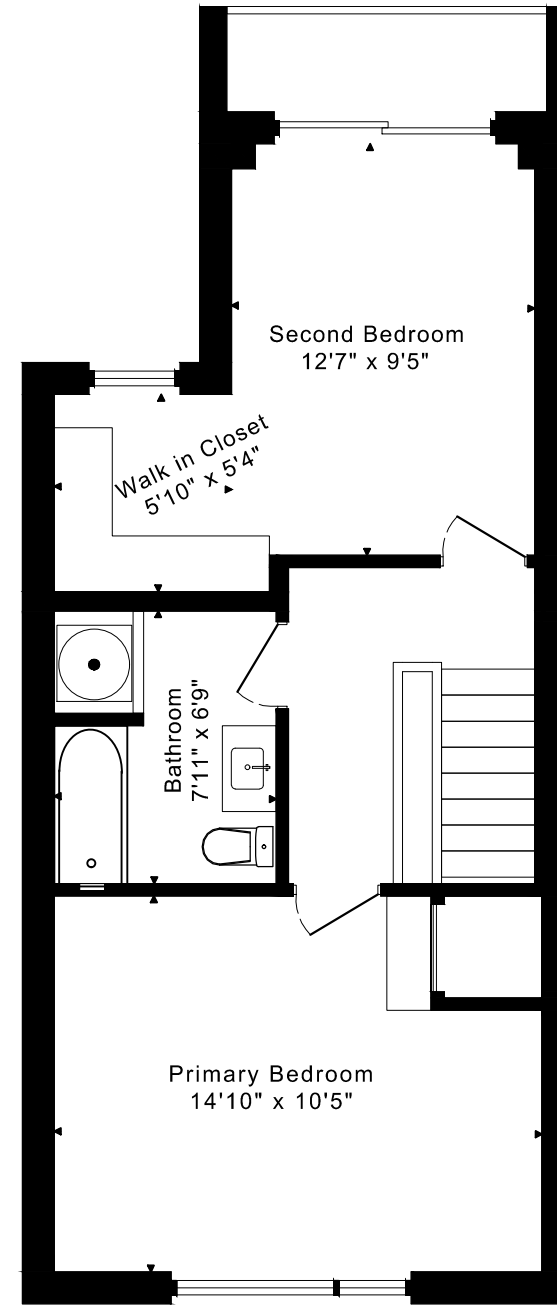
748 BROCK AVENUE FLOOR PLANS



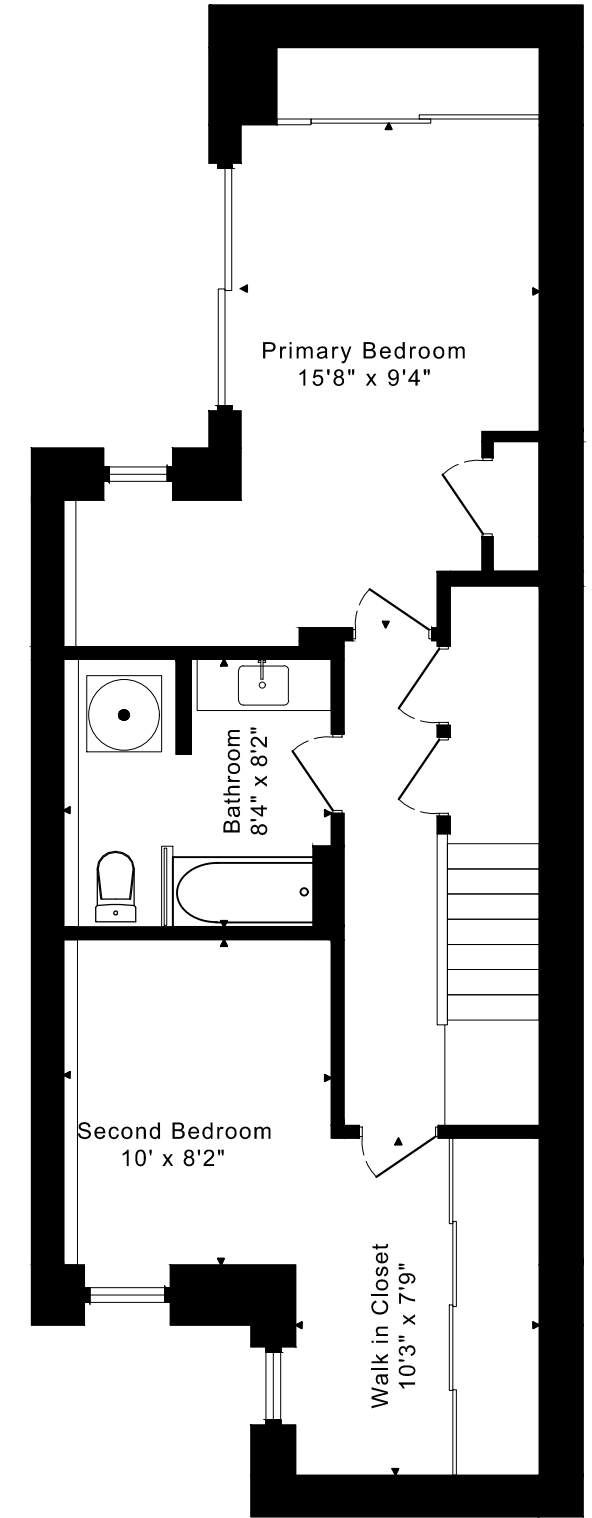
MAIN FLOOR
610 SQUARE FEET



SECOND FLOOR
575 SQUARE FEET



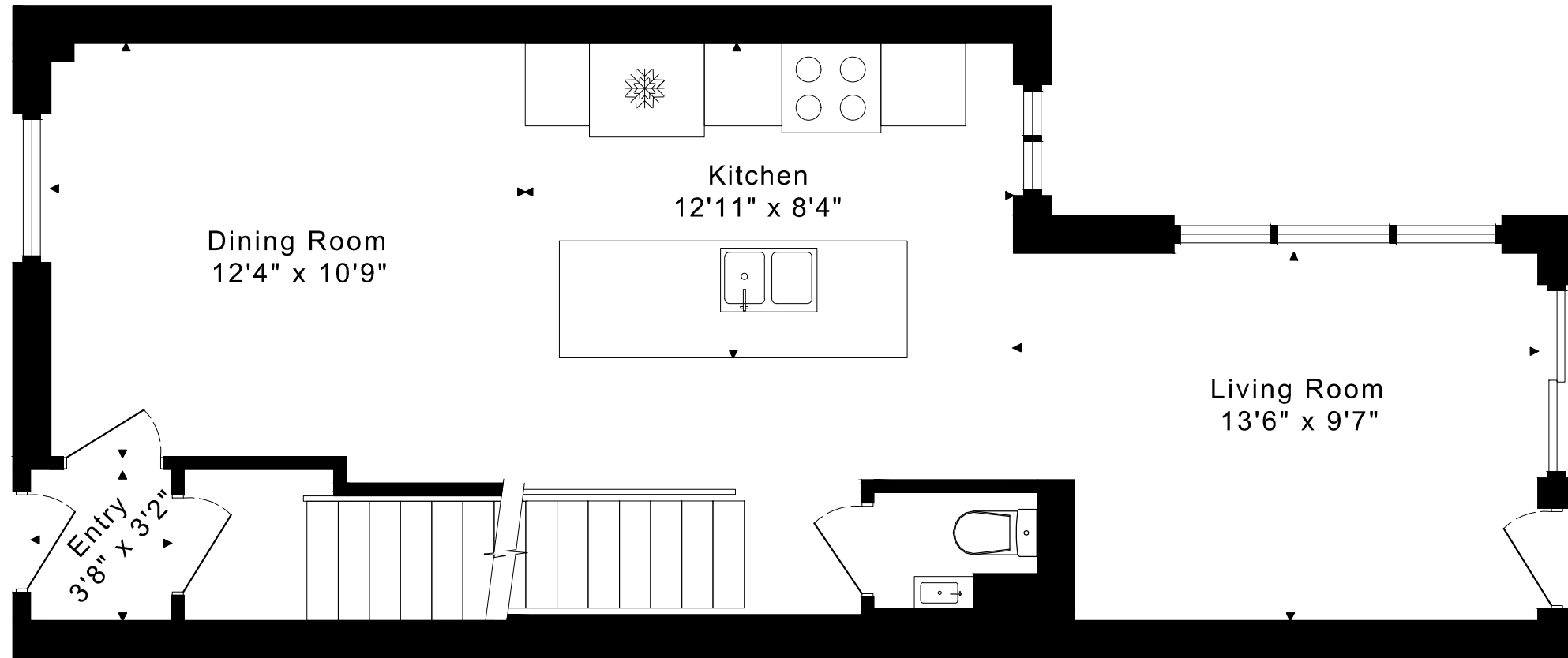
THIRD FLOOR
570 SQUARE FEET



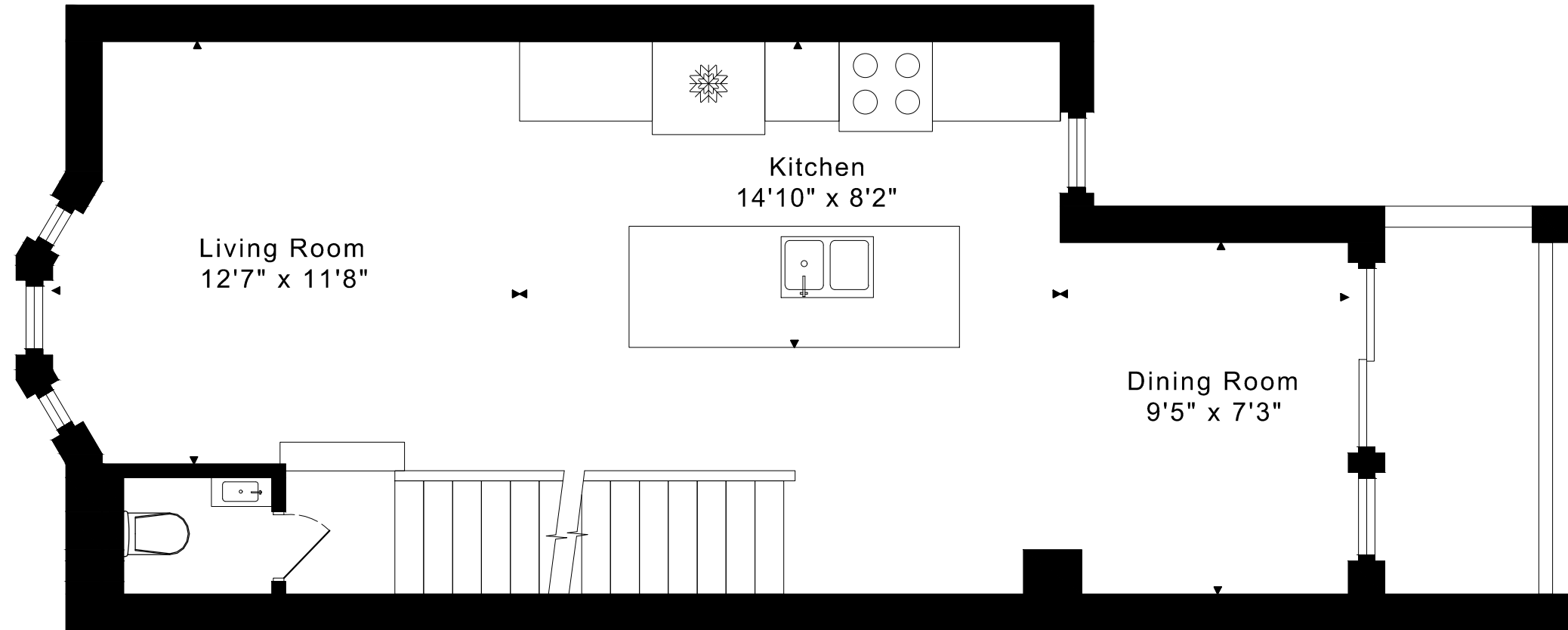
LOWER FLOOR
670 SQUARE FEET

748 BROCK AVENUE FLOOR PLANS

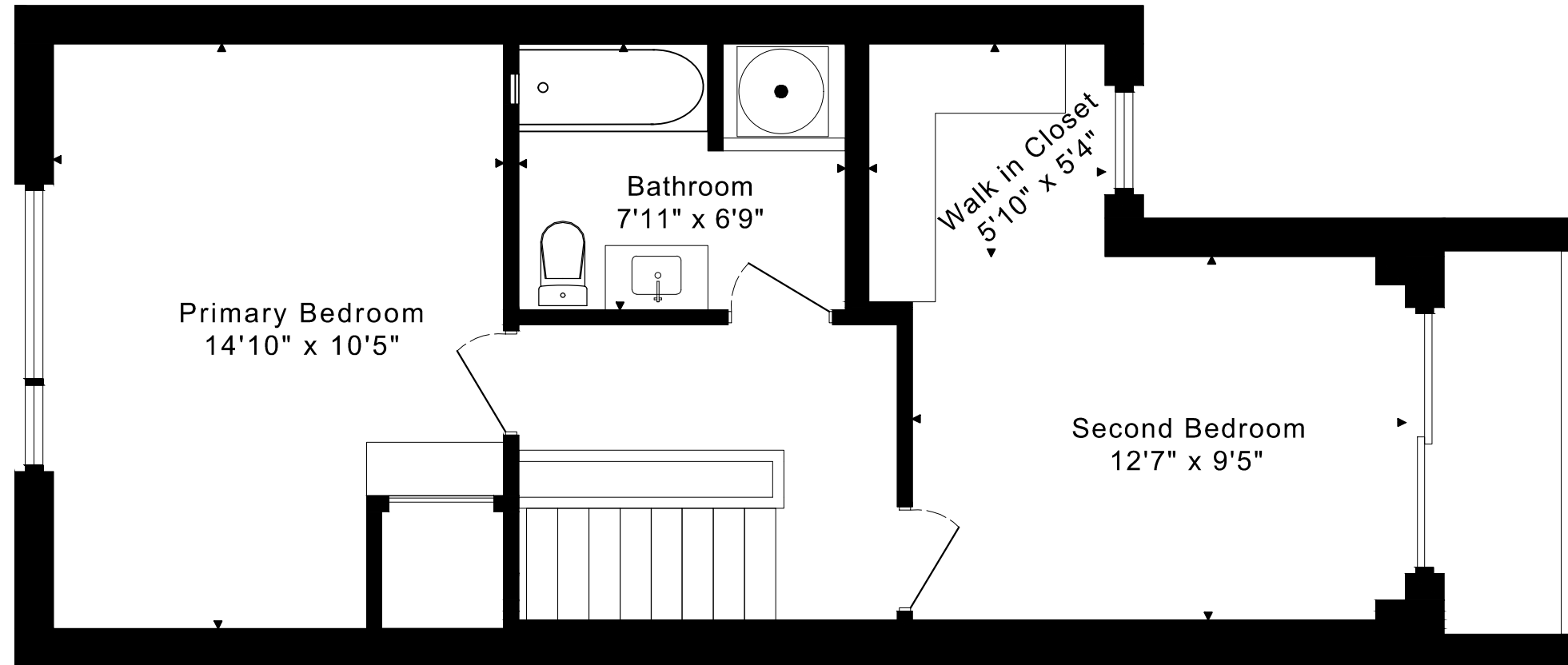
MAIN FLOOR 610 SQUARE FEET



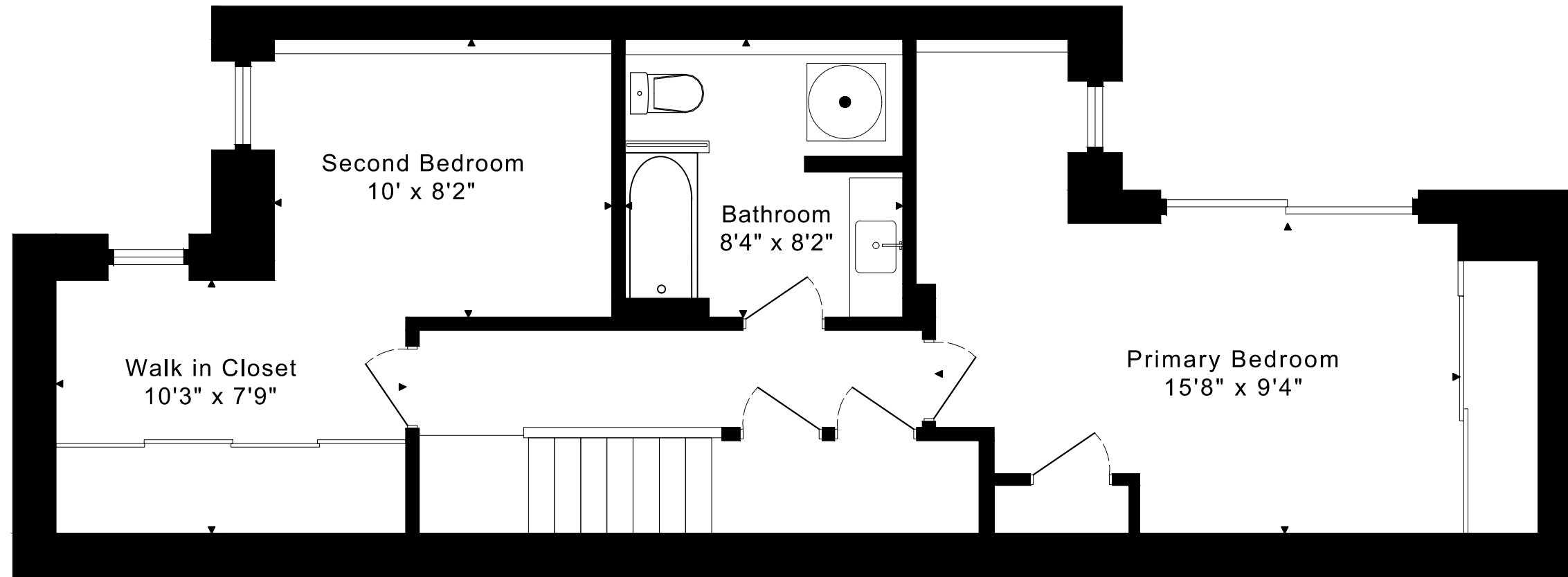
748 BROCK AVENUE
FLOOR PLANS
SECOND FLOOR 575 SQUARE FEET



748 BROCK AVENUE
FLOOR PLANS
THIRD FLOOR 570 SQUARE FEET



748 BROCK AVENUE
FLOOR PLANS
LOWER FLOOR 670 SQUARE FEET



748 BROCK AVENUE ROOM MEASUREMENTS

Floor	Room	Imperial				Metric [m]	
		Length		Width		Length	Width
		Feet	Inches	Feet	Inches		
Third	Primary Bedroom	14	10	10	5	4,52	3,18
	Second Bedroom	12	7	9	5	3,84	2,87
	Walk in Closet	5	10	5	4	1,78	1,63
	Bathroom	7	11	6	9	2,41	2,06
Second	Living Room	12	7	11	8	3,84	3,56
	Dining Room	9	5	7	3	2,87	2,21
	Kitchen	14	10	8	2	4,52	2,49
Main	Entry	3	8	3	2	1,12	0,97
	Living Room	13	6	9	7	4,11	2,92
	Dining Room	12	4	10	9	3,76	3,28
	Kitchen	12	11	8	4	3,94	2,54
Lower	Primary Bedroom	15	8	9	4	4,78	2,84
	Second Bedroom	10	0	8	2	3,05	2,49
	Walk in Closet	10	3	7	9	3,12	2,36
	Bathroom	8	4	8	2	2,54	2,49

The following is a disclaimer regarding the approximate nature of dimensions and floor areas listed in this document:

Disclaimer:

The dimensions and floor areas listed in this document are provided as an estimate only and are intended to be used for illustration purposes only. These measurements are not necessarily meant to be a perfect representation of the actual space.

Notes regarding measurement methods and accuracy:

The utilization of laser measurement technology during the 3D model capturing process at the location provides an accurate representation of floor plans, with a typical margin of error of 3-5%. For the most accurate and official measurement data, it is advised to consult official documents such as MPAC records, builder's pre-construction plans, or data from certified measurement companies.

Exterior wall thickness is included in the calculation of the overall square footage and is considered as a component of the footprint. The wall thickness measurement is obtained onsite whenever possible, or estimated in the event where obtaining onsite measurements is not possible, such as in the case of condominium buildings where wall thickness may vary throughout the building.