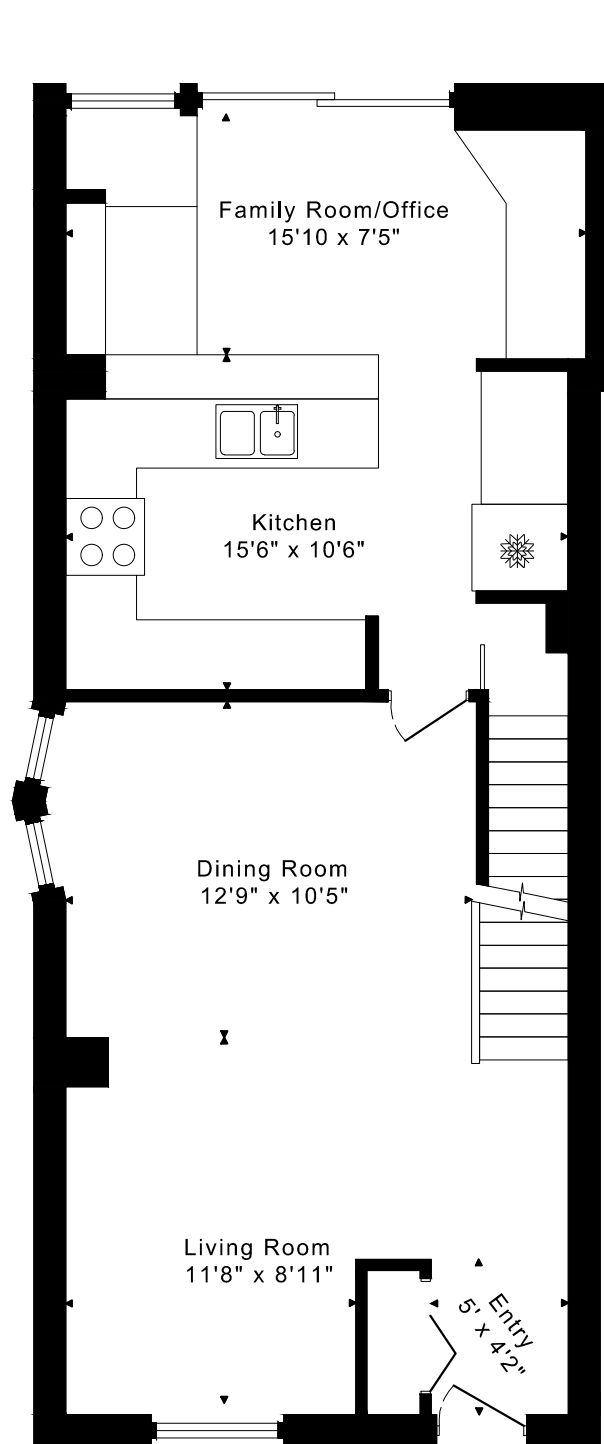
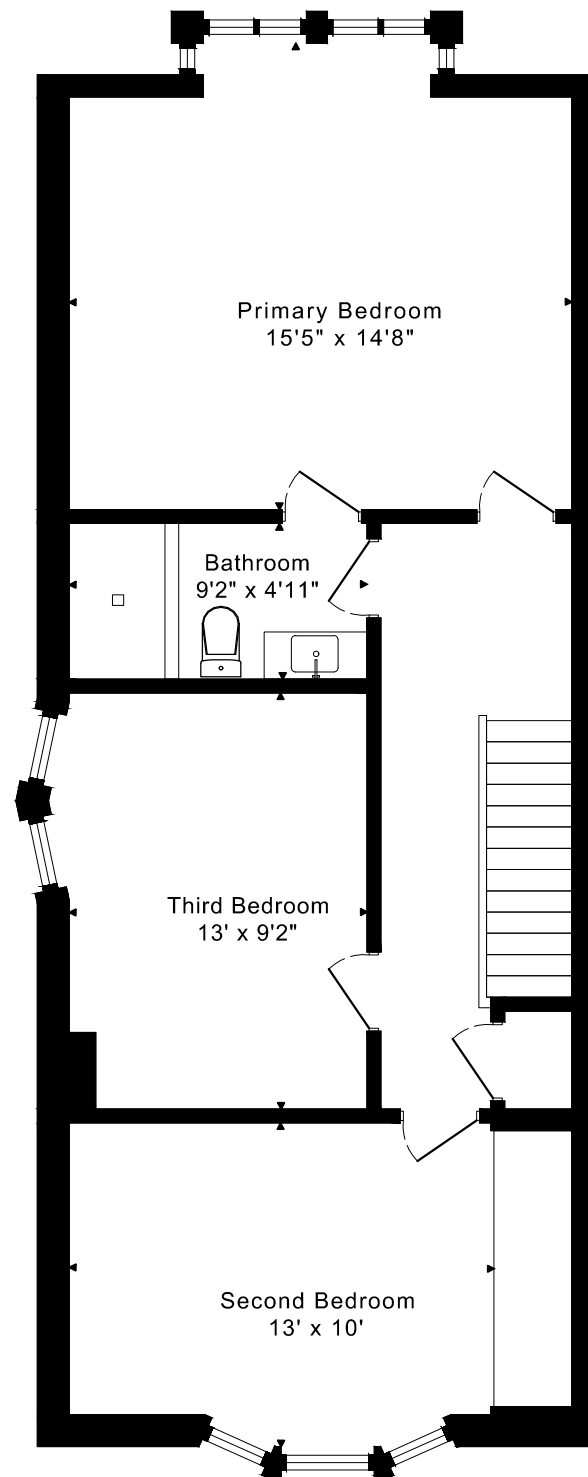


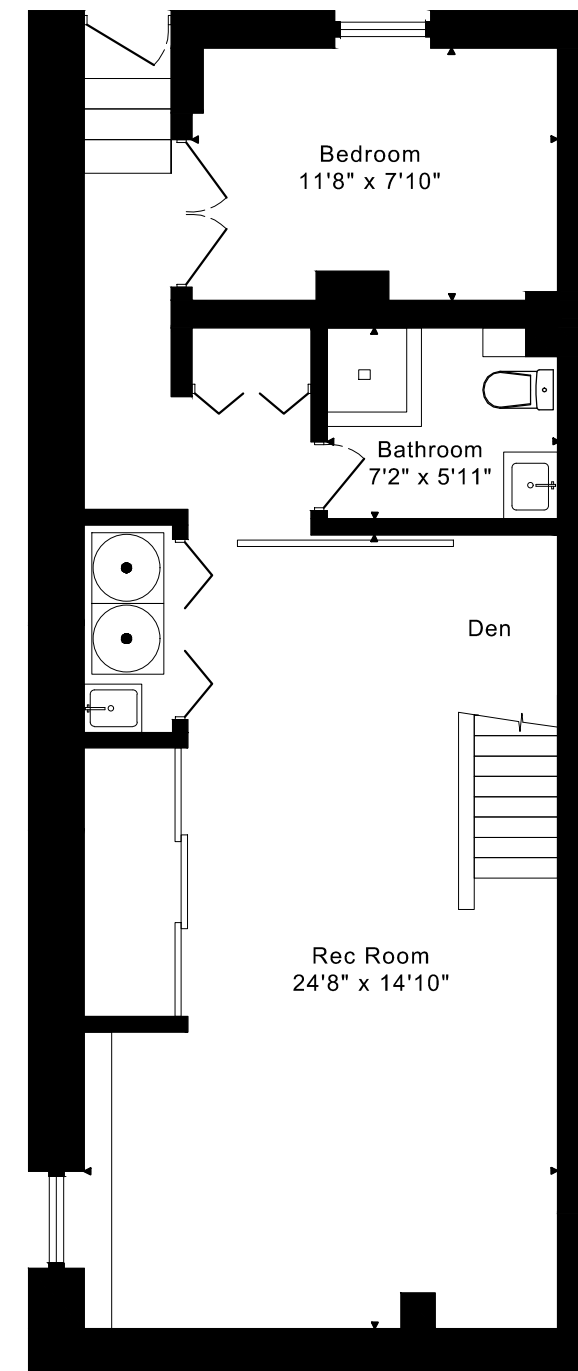
41 GRANDVIEW AVENUE FLOOR PLANS



MAIN FLOOR
725 SQUARE FEET



SECOND FLOOR
755 SQUARE FEET

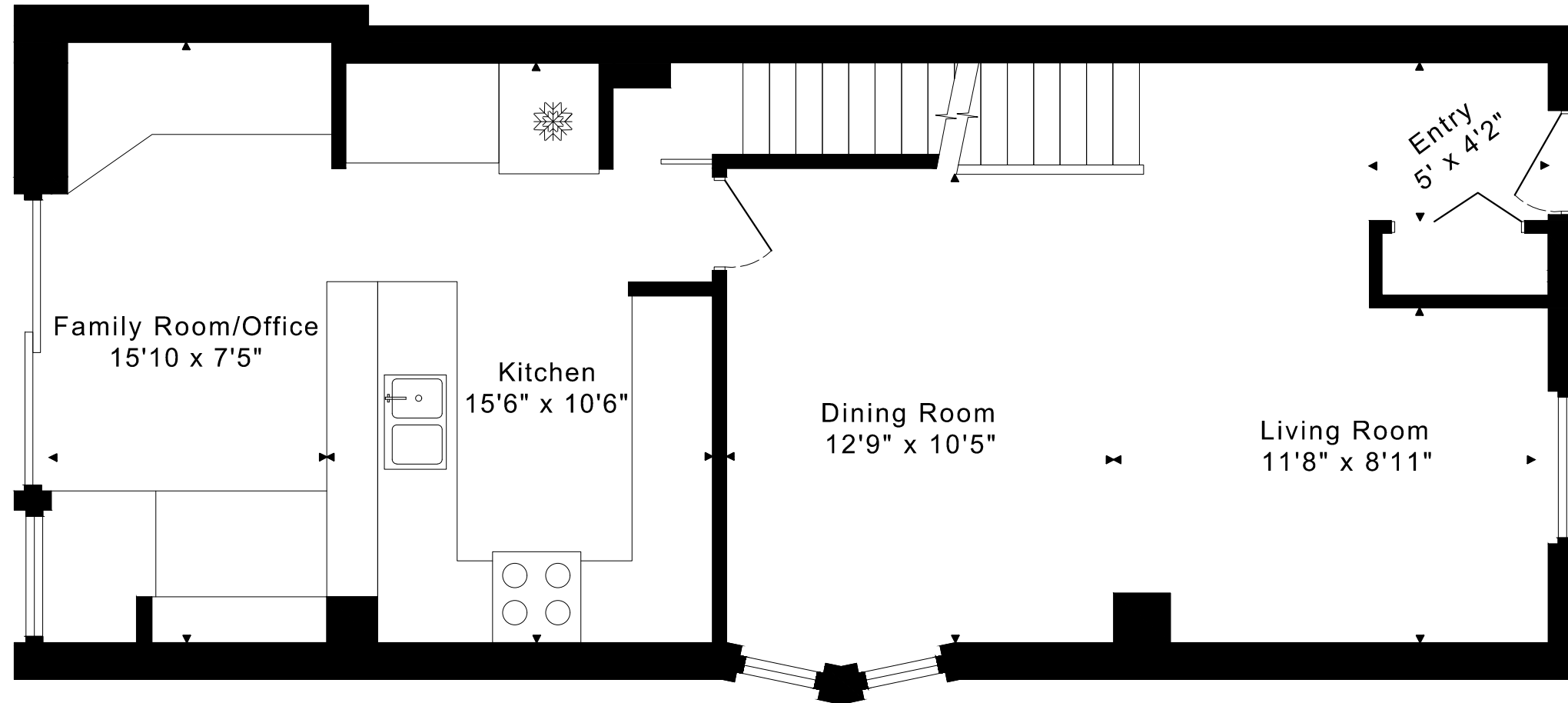


LOWER FLOOR
725 SQUARE FEET

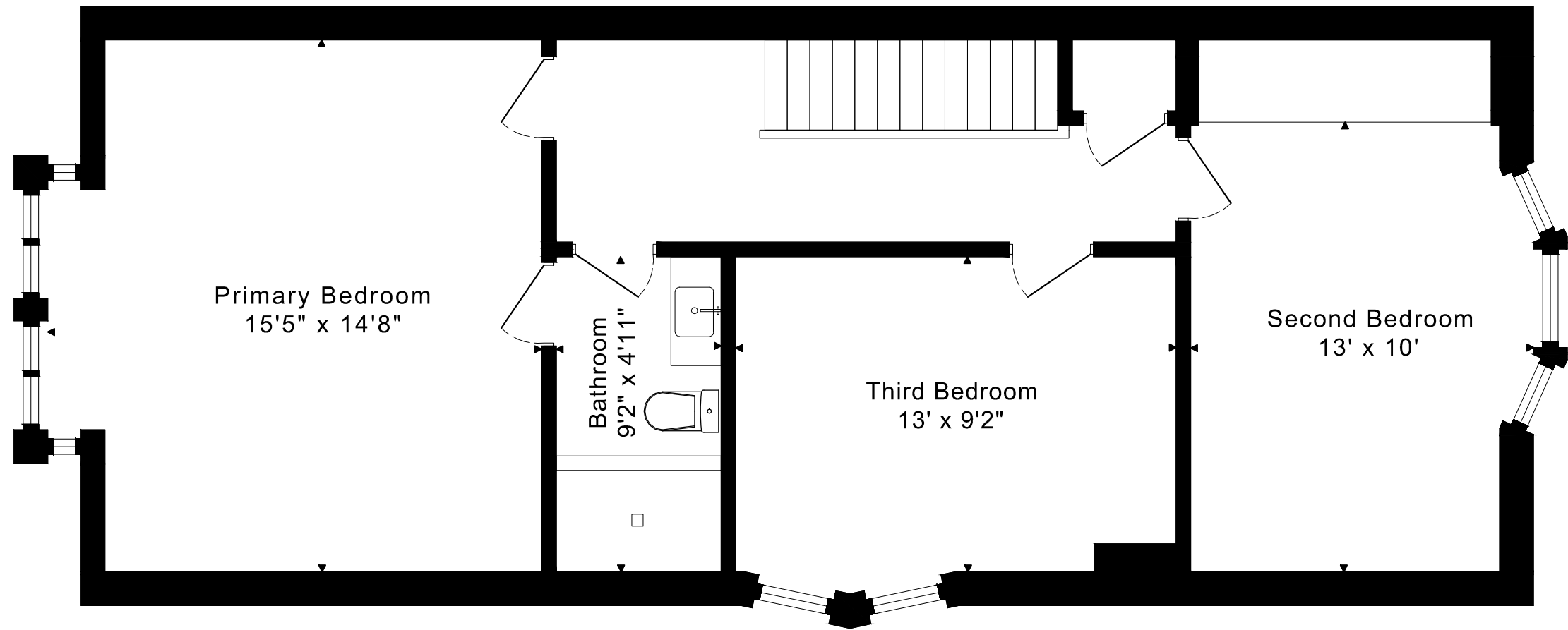
1480 sq ft + 725 sq ft
BELOW GRADE

41 GRANDVIEW AVENUE FLOOR PLANS

MAIN FLOOR 725 SQUARE FEET

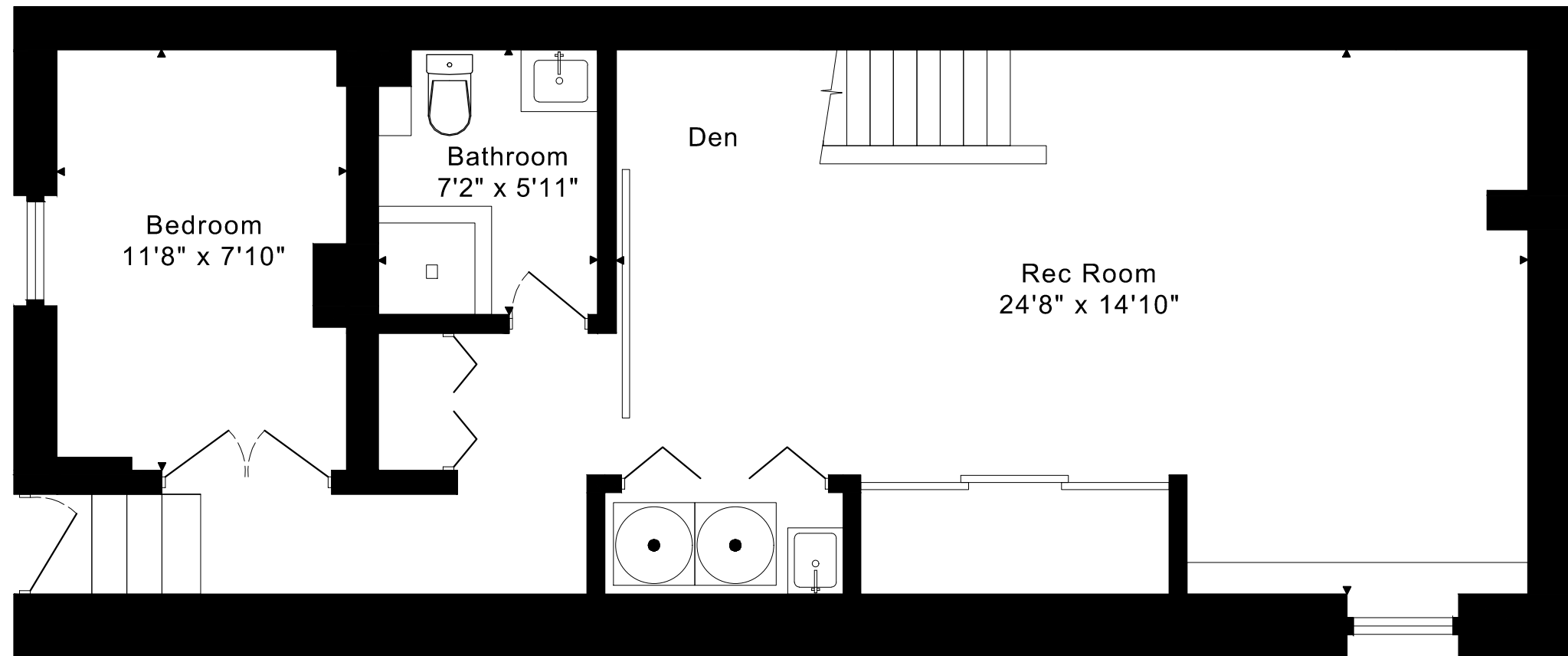


41 GRANDVIEW AVENUE
FLOOR PLANS
SECOND FLOOR 755 SQUARE FEET



41 GRANDVIEW AVENUE FLOOR PLANS

LOWER FLOOR 725 SQUARE FEET



41 GRANDVIEW AVENUE ROOM MEASUREMENTS

Floor	Room	Imperial						Metric [m]		
		Length		Width		Height		Length	Width	Height
		Feet	Inches	Feet	Inches	Feet	Inches			
Second	Primary Bedroom	15	5	14	8	8	0	4,70	4,27	2,44
	Second Bedroom	13	0	10	0	8	0	3,96	3,05	2,44
	Third Bedroom	13	0	9	2	8	0	3,96	2,74	2,44
	Bathroom	9	2	4	11	8	1	2,79	1,22	2,46
Main	Entry	5	0	4	2	8	11	1,52	1,22	2,72
	Living Room	11	8	8	11	8	11	3,56	2,44	2,72
	Dining Room	12	9	10	5	8	11	3,89	3,05	2,72
	Kitchen	15	6	10	6	8	0	4,72	3,05	2,44
	Family Room/Office	15	10	7	5	8	0	4,83	2,13	2,44
Lower	Rec Room	24	8	14	10	6	5	7,52	4,27	1,96
	Bedroom	11	8	7	10	6	5	3,56	2,13	1,96
	Bathroom	7	2	5	11	6	5	2,18	1,52	1,96

CAPTURED ON: 7 MAR 2025
 DIMENSIONS ARE APPROXIMATE AND SHOULD BE CONSIDERED
 ILLUSTRATIVE ONLY.

1480 sq ft + 725 sq ft
 BELOW GRADE

The following is a disclaimer regarding the approximate nature of dimensions and floor areas listed in this document:

Disclaimer:

The dimensions and floor areas listed in this document are provided as an estimate only and are intended to be used for illustration purposes only. These measurements are not necessarily meant to be a perfect representation of the actual space.

Notes regarding measurement methods and accuracy:

The utilization of laser measurement technology during the 3D model capturing process at the location provides an accurate representation of floor plans, with a typical margin of error of 3-5%. For the most accurate and official measurement data, it is advised to consult official documents such as MPAC records, builder's pre-construction plans, or data from certified measurement companies.

Exterior wall thickness is included in the calculation of the overall square footage and is considered as a component of the footprint. The wall thickness measurement is obtained onsite whenever possible, or estimated in the event where obtaining onsite measurements is not possible, such as in the case of condominium buildings where wall thickness may vary throughout the building.